

ALDI Textiles



Aloe Vera. Recognises the demand all on its own.

A



Aloe vera micro capsules are attached to the textile fibres using a binder. The friction from wearing causes the microcapsules to burst and release the moisturising substance. The advantage of the microcapsules is the fact that the encapsulated substance is only released when the fabric is mechanically stressed. Through the addition of the aloe vera capsules, the garment hydrates and moisturises the skin.

Anti-Pilling. Reduces pilling.

A



Anti-pilling is a special finishing process for reducing the formation of pilling, meaning lint, in predominantly synthetic materials. This is primarily achieved through a mechanical process or heat treatment.

B

Breathable. Keeps you dry and keeps moisture away.



Breathable fabrics are defined as textiles which possess certain physiological properties which above all wick moisture away from the skin. Such materials may also be water-resistant and therefore protect against rain.

See also: Cool & Fresh, COOLMAX®

C

Cotton. The all-rounder among textiles.

Cotton is derived from the soft seed hair of the cotton plant. The plant thrives in countries with a sub-tropical climate, such as the USA, Egypt, India, and South Africa, and in terms of volume is one of the most important raw textiles materials in the world. The quality of cotton wool is dependent on its fineness, strength, fibre length and consistency.

See also: Wool, virgin wool, organic cotton, Pima cotton

PROPERTIES:**It is skin-friendly:**

Due to its softness, it is very pleasant on the skin.

It has a high level of absorbency:

Cotton can absorb moisture very well but is very poor at releasing it.

It is very durable:

It is very tear resistant (more so when wet than when dry). It also has the highest level of abrasion resistance among natural fibres.

It has good hygienic properties: Cotton can absorb sweat very well due to its strong absorbency and is therefore skin-friendly.

It is boil-proof and resistant to chemical dry-cleaning processes:

The fibres can be exposed to high temperatures meaning that they can be hygienically flushed during washing.

Organic cotton For the sake of the environment.

C



Organic cotton: is sourced from environmentally compatible cultivation, where it is grown and processed without the use of pesticides, synthetic or chemical fertilisers. This method is safer for the health of the cotton farm workers and is more environmentally sustainable. Organic cotton is cultivated according to the most rigorous ecological and environmentally friendly criteria and is absolutely free of pollutants.

See also: Cotton

BIONIC FINISH® ECO. The ultimate protection from stains.

B



BIONIC FINISH® ECO is a finishing trademark of the RUDOLF GROUP. BIONIC FINISH® ECO is a hydrophobic finish for textiles and stands for ecological and sustainable technology based on a formula which is free of fluorocarbons. Garments with this finish are water repellent.



B

Body fit — close fit The body fit business shirt.



Body fit means that our shirt provides a fashionable slim cut and tailored fit. Shaping waist darts ensure a comfortable fit.

ALL TYPES OF FIT:

- Body fit
- Close fit
- Regular fit
- Normal fit
- Modern fit
- Figure-hugging fit



B

Button-down collar. Casual for business and pleasure.

The **button-down collar** is a sporty style without collar stiffeners and the collar shanks are buttoned directly to the shirt. Shirts with a button-down collar can be worn with or without a tie meaning that are suitable for business and leisure alike.

See also: Shark collar, Kent collar, Wendler interlining



Ciréfinish / Ciré finish. The popular wet look.

C



For a **Ciréfinish/Ciré finish**, fabrics are given a wax finish through a process of applying pressure and warmth. This causes the material to stiffen and become rigid, giving it a “wet look” effect.

Cool & Fresh. Cool at every temperature.

C



The special weave style of **Cool & Fresh** fabric promotes air circulation and therefore guarantees that you remain cool on warmer days.

See also: [Breathable fabric](#)

COOLMAX®. Keeps you cool and maximises performance.

C



COOLMAX® is a brand by INVISTA. This brand stands for a fabric which ensures a pleasant body temperature. The multi-channel fibres wick moisture away from the skin to the outer surface of the fabric where it then evaporates. This way, body temperature remains constant — even with heavy physical exertion — and a drop in temperature is also avoided.

COOLMAX® X4AIR stands for the further development of the COOLMAX® brand by INVISTA. COOL-MAX® X4Air fabric ensures even better moisture management. The new propeller fibre technology keeps the skin cool and dry, and the considerably greater number of filaments in the fabric ensures a wonderfully soft feel.



CORDURA® (for work trousers). Robust.

C



CORDURA® fabric is well-known for its long-lasting durability and its strong resistance to wear and tear. It is a primary component of many leading high-performance equipment and clothing products worldwide.

Among other things, CORDURA® fabrics are used to manufacture luggage items, backpacks, footwear, as well as sports and motorcycle clothing, and work and protective wear. CORDURA® is a brand by INVISTA.



D

Double Windsor knot. A complex knot in six steps.



The **double Windsor knot** was named after the English Duke of Windsor. This method of tying is particularly suited to thin smooth ties and shirts with a long collar.

See also: Simple tie knot

E

ecorepel®. Environmentally friendly pearling effect.



ecorepel® is an environmentally friendly form of water repellent finishing. The technology imitates the water repellent properties of duck feathers. Water and watery dirt simply run off in droplets and the fabric stays clean and dry. Just like the feathers of a duck.



F

Fine lawn cloth Fine and glossy.

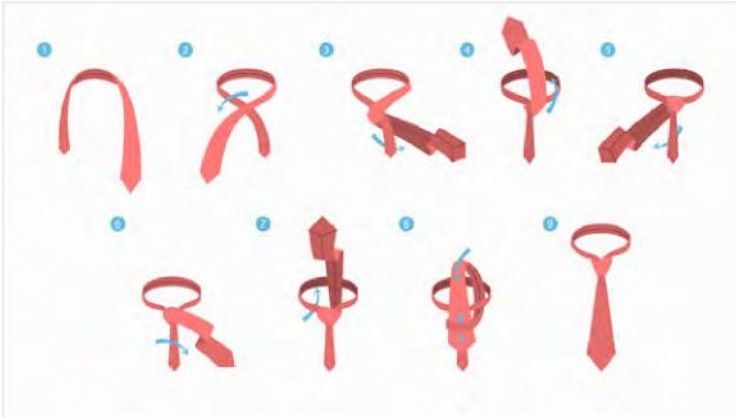


Fine lawn cloth has the appearance of linen and is composed of fine to medium threads of cotton yarn.

See also: Renforcé

S

Simple tie knot. Only four steps to success.



The **single tie knot**, also called the "four-in-hand", is a tie knot which is suited to every collar type and is easy and fast to learn due to its simplicity.

See also: Double Windsor knot

Elastane. Flexible when you need it to be.

E



Elastane (also called Spandex in Asia, USA and Canada) stands for elastic synthetic fibres which were invented in the USA in 1958 in order to replace rubber. Elastane can be stretched to between four and seven times its original length and returns to its original length once tension decreases. Elastane is never processed merely on its own but rather in combination with one or multiple other natural or synthetic fibres. Depending on the type of garment and fabric, elastane provides elasticity, long-lasting form stability, improved wearing comfort, form, snugness, improved useful life and suppleness.

See also: LYCRA®

FAIRTRADE® cotton. Traded according to Fairtrade standards.

F



Fairtrade or "fair trade" stands for a strategic approach to trade policy which pursues the goal of making consumer behaviour more responsible and improving the situations of smallholders and workers all over the world. By purchasing products from fairly traded sources, the customer is making their contribution to improving the working conditions of farmers and farmworkers in Africa, Asia, and Latin America. Fair trade promotes above all smallholder families within the countries of the southern hemisphere.



Flannel. More than just check shirts.

F



Flannel is a light, warm, and absorbent fabric which is predominantly used for flannel shirts and wool garments worn in the cold months of the year. The roughened material consists mostly of cotton and/or wool.

Fleece. Snuggly and warm.

F



Fleece is a napped knitted fabric which is predominantly used for insulating outdoor sportswear and functional clothing items. Today, fleece is usually made from polyester. Combinations with cotton and wool are also possible. Fleece is proven to have a high heat insulation capacity despite being light in weight. In addition to this, it is elastic, consistent in form, easy to clean, does not crease, and is soft on the skin. However, fleece is not wind-proof.

F

Shark collar. Particularly suitable for wide tie knots.



The **shark collar**, also called the “cutaway collar”, is a fashionable high collar where the collar points are separated at a 160° angle. It is therefore well suited to particularly large tie knots, such as the Windsor knot. This form of often used for business shirts.

See also: Button-down collar, Kent collar, Wendler interlining



Single yarn. Two interlocked fibres = yarn.

S



Single yarn refers to the method where only the warp thread is twisted.

Hand-linked. No seam for more comfort.

H



The opening at the toe is sewn together with a single thread by linking each individual stitch with the opposite stitch. This method ensures that the seam can neither be seen nor felt on the skin. By **hand-linking**, the sewn opening remains extremely flat, particularly strong, and extremely durable.

Inspections. Our quality control.

I



Textiles are inspected to ensure the correct quality of workmanship. Product defects are identified during such inspections and are either corrected or the defect product is removed from processing. These inspections are performed on random samples taken from the batch of finished products. Samples are drawn according to the DIN ISO 2859 standard and then inspected and rated according to the catalogue of testing criteria developed by ALDI. The exact assessment criteria for quality of workmanship contain descriptions of defects that are not accepted by ALDI (e.g. open or uneven seams, holes, incorrect colour or print). Only once our requirements for quality of workmanship are fulfilled can the goods be delivered to ALDI.

Jacquard. Premium living.

J



Jacquard is a woven or knitted fabric with a woven pattern which sometimes appears to be raised. Jacquard fabrics can be made of cotton, viscose, polyester, silk, or combination of materials. It is used for both clothing garments and homewares.

Cashmere. Exceptionally soft and pleasant on the skin.

C



Cashmere wool is made from the undercoat of cashmere goats. It is made up of fine and very soft fibres which are not gained from shearing the goat but rather by combing it or by collecting the fur shed by the goat in spring. Cashmere insulates and warms, and is also extremely soft on the skin.

K

Kent collar. The most commonly found collar type.



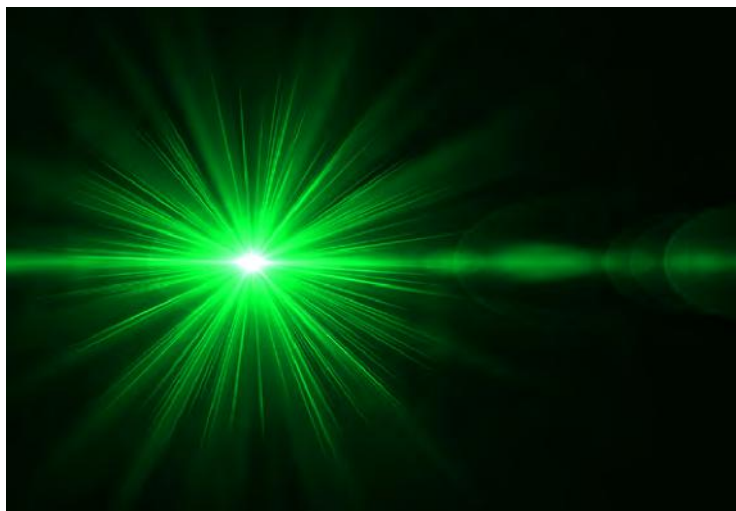
The **Kent collar**, also called the “turn-down collar”, has a medium length, right or acute angle, only a moderate gap between the collar shanks, and is often used for business shirts.

See also: Button-down collar, shark collar, Wendler interlining



L

Laser cut. Does without annoying seams.



The **laser cut** is a method of cutting functional textiles made from synthetic fibres. The fabric is not cut mechanically using a knife or scissors but instead thermally using a concentrated beam of light. This means that the cut edges no longer need to be stabilised by a seam because they are melted. This in turns provides a very smooth edge and the garment has no annoying edge seams.

Linen. Ideal for summer.



Linen fibre comes from the stem of the flax plant and is characterised by its smoothness and stability. Due to the low warmth retention of linen, the fibre is particularly suitable for summer garments. Linen is also used, for example, for dish clothes (more specifically glass polishing cloths), because it can polish glass without leaving almost any residual fluff.

LYCRA®. Freedom of movement guaranteed.



LYCRA® is the brand name for elastic fibres by INVISTA. LYCRA® brand fibre has extraordinary elasticity and form recovery properties, and helps to improve all types of materials and garments by providing additional comfort and freedom of movement, improved fit, shape retention, suppleness, and the ability to recovery from creasing/wrinkling. Garments made with the LYCRA® brand fibre can, for example, also be cut in close-fitting aerodynamic styles without restricting movement due to the high level of elasticity.

See also: Elastane



Lyocell. Keeps a lot out and draws a lot in.

L



The incredibly soft, supple and voluminous **Lyocell fibre** is characterised by its strong durability and high level of moisture absorption.

Mako satin. Smooth and shiny.

M



Mako satin is made 100% from cotton. It is very fine, shiny, absorbent, smooth, and also soft. Mako satin is made from Mako cotton cultivated in Egypt which is then woven using a special weave. Mako satin generally receives its shine due to a mercerisation process, which gives it a longer shelf life and ensures that it maintains its quality and shine despite constant washing.

See also: [Mercerisation](#)

M

Mercerisation. A refinement process for cotton.



Mercerisation is a process of refining cotton using a sodium hydroxide solution. This method gives the fabric an elegant sheen and makes it more tear-resistant. Apart from this, it also reduces the strong tendency of shrinkage which is typical of cotton.

C

Cuffs with two buttons. The most common form of cuff.



These **cuffs** are closed using two buttons placed side by side.

See also: French cuff

Membrane. Comfortable to wear thanks to breathability.

M



Membrane ensures moisture management and weather resistance for a comfortable body temperature. In addition, it also prevents wind, rain and snow from penetrating the fabric while allowing body moisture to escape without restriction.

See also: [Breathable fabric](#)

Merino wool. Insulates, breathes, and prevents odour.

M



Merino wool is the new wool gained from Merino sheep and is the finest, highest quality wool in the world. Every spring, the wool is hand-sheared from the skin of Merino sheep. It not only feels silky smooth, it also insulates very well, is breathable, and prevents odours from forming. The Merino wool used for ALDI products is guaranteed to be sourced without the practice of Mulesing.

Merino wool is processed from the fleece of Merino sheep. The particularly fine wool fibres not just provide excellent warmth, they also regulate moisture and odour, and have antibacterial properties. Through the innovative combination with functional synthetic fibres, it has been possible to develop garments which are setting new standards in terms of wearing comfort, durability, and climate comfort.

Microfleece. Fine fibres with a high level of comfort.

M



Microfleece is even lighter thanks to its fine fibres and also provides an even higher level of insulation than fleece. It also transports moisture well.

See also: Fleece

Microfibre. No chance for moisture.

M



The term **Microfibre** refers to synthetic fibres made from polyester and polyamide or polyacrylics with a yarn count of 0.3-1 dtex (i.e. 10,000m of fibres weighs 0.3-1g). Due to the variety of different finishes possible, microfibre textiles are smooth, light, breathable, water-repellent, and are still soft to touch despite their durability.

TENCEL™ MODAL Great form despite the high level of strain.

M



TENCEL™ Modal fibres produced by Lenzing are naturally soft on the skin and manufactured in a very environmentally friendly manner. Due to the use of renewable energy and the recovery of process chemicals, their production requires less energy and resources.



Modern Fit. Figure-hugging fit

M



Modern fit means that our business shirts are tailored with a close, fashionable and slim fit without sitting too tight. For this reason, **modern fit** shirts are excellent for slim-fitting male fashion.

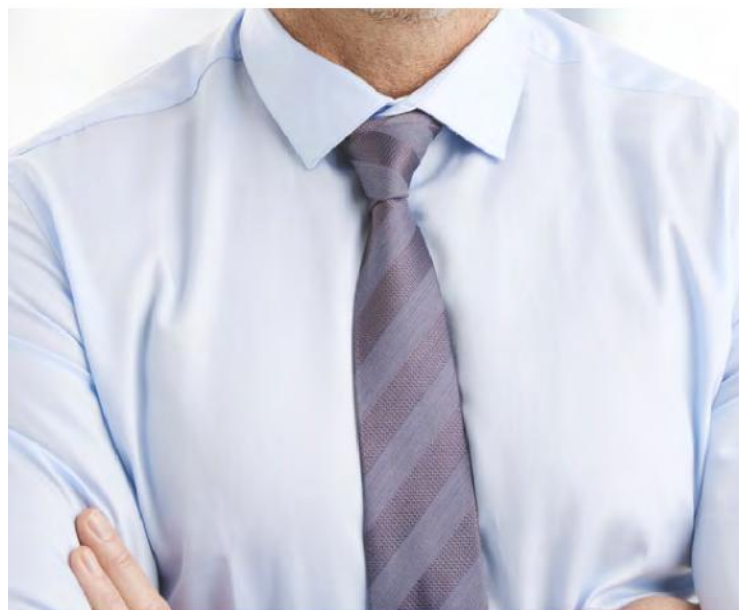
ALL TYPES OF FIT:

- Body fit
- Close fit
- Regular fit
- Normal fit
- Modern fit
- Figure-hugging fit



Modern Kent collar The elegant classic.

M



The **Modern Kent collar** is often worn with a tie or bow tie and is particularly suited to the business look or formal occasions with or without a suit. In contrast to the classic Kent collar, the modern Kent collar is a short pointed collar and offers sufficient space for the majority of tie knots, tie forms, and bow ties.



Molina. Soft fabric.

M



Molina is a type of wadding that feels similar to down feather.

Sustainable cotton. Sustainability labels.



Cotton made in Africa

The "Cotton made in Africa" initiative founded in 2005 is committed to giving as many smallholders in Africa as possible the ability to improve living conditions for themselves and their families.

The concept pursued by the initiative is based on the idea of helping people to help themselves: by providing agricultural and business training, smallholders are given comprehensive knowledge which puts them in a position to independently and sustainably cultivate cotton and therefore increase their harvests. At the same time, these sustainable cultivation methods contribute to the protection of the environment and also improve the quality of the cotton.



GOTS

The Global Organic Textile Standard (GOTS) is a worldwide standard recognised within the textiles industry. The aim of the standard is to define requirements for ensuring the sustainable production of textiles from organic natural fibres. The criteria are connected to all phases of production. The production standard is intended to guarantee the following aspects:

- Preservation of natural resources
- Compliance with minimum social standards in production operations
- Quality assurance (products free of additives which are deemed harmful to health)

As a basic requirement for the certification of textile products, the products must comprise at least 70% organic natural fibres.

OCS

The Organic Content Standard (OCS) guarantees for businesses and consumers alike that a product actually contains the percentage of organic natural fibres stated on the packaging.

Depending on the percentage of organically cultivated natural fibres contained in the product, it will display either the "OCS Blended" logo (meaning at least 5% organic natural content) or the "OCS 100" logo (meaning at least 95% organic natural content).

See also: Cotton

NILIT®. High-quality nylon fabric._

N



NILIT® is a manufacturer and brand for high-quality nylon fibres which offer a wide variety of options for manufacturing an array of different products with special properties. Nilit is particularly used for hosiery and seamless woven and circular knitted products.

NILIT® Fibers

NILIT® SOFTEX. Almost like a second skin._

N



Textured yarns with a particularly soft feel which resembles silk. **NILIT® SOFTEX** is a high-quality yarn made up of many ultra-fine filaments. It gives fabric a very soft feel and is particularly pleasant on the skin.

PROPERTIES:

It is breathable.

It regulates moisture.

It is extra-fine.

It is very soft to wear – almost like a second skin.

NILIT® Softex
Softness by Design

Percale. Coloured, printed, or embroidered.

P



Percale is a type of cotton which is particularly fine-threaded, dense but light, and is woven using a plain weave technique. Percale is often used as the basis for printed patterns with a delicate design on blouses, shirts, and bed covers.

Pima Cotton. Softer and fuller feel than conventional cotton.

P



Pima cotton is a higher quality type of cotton with a relatively high staple length, meaning that the fibres are much longer than those of conventional cotton. For this reason, textiles containing the high-quality Pima cotton are crease-resistant, have a very smooth surface, and are much softer and suppler than textiles made from conventional cotton while still being fuller and firmer in structure.

See also: Cotton

Polyacrylic. Dries fast, does not pill, and retains its form.

P



Polyacrylic is a synthetic fibre which resembles wool. It feels like wool and has a high level of puffiness. The fabric is characterised by properties such as easy care, warmth-retention, and iron-free.

Polyamide. Does not tear, does not chafe, and regulates moisture on its own.

P



Polyamide fibres are the oldest known type of synthetic fibres and are particularly tear-resistant and abrasion-resistant, elastic, consistent in form, and easy to clean. They are also light, soft, and also breathable. The fibres absorb much less moisture than natural fibres but just enough to ensure that the electrostatic charge remains manageable when dry. Polyamide fibres are manufactured by different companies. Well-known brands of polyamide fibres include TACTEL® and NILIT®.

See also: TACTEL®, NILIT®

Polyester. Retains its form despite moisture.

P



Since 1947, **polyester** has been the most widely produced industrial synthetic fibre in the world. The fibres are characterised by a high degree of elasticity and dimensional stability, even when wet.

Polyethylene. Environmentally friendly production and recycling.

P



Polyethylene is the most commonly used synthetic material worldwide. Today, this plastic is considered indispensable, not only for the production of many consumer products such as furniture, pipework, and polyethylene containers but above all packaging. The synthetic material is particularly popular because of its wide-ranging uses and its ability to be produced in large quantities without problem. At the same time, the production of polyethylene is environmentally friendly and the material can be recycled.

Polypropylene. Ideal for sports activities.

P



Polypropylene is a light, high-tech fibre. Since polypropylene does not absorb moisture and provides a very good capillary effect, it ensures perfect body temperature.

Polyurethane. For more quality in all areas of your life.

P



Polyurethane is a synthetic material which can be used in a variety of ways in everyday life. In many areas of our lives, there is a large chance that we use products which contain polyurethane, e.g. in refrigerators, vehicles, and water heaters. Polyurethane can be used in many forms, such as foam, paint, adhesive, fibres, etc. As highly elastic foam, for example, it is used to manufacture shoe soles, while soft foam is used to make mattresses and upholstery.

PU coating. The skin can breathe while dirt is kept at bay.

P



The term **PU coating** refers to polyurethane coating. This coating makes the material very breathable and flexible while still strongly repelling moisture.

See also: [Breathable fabric](#)

Regine IQtrim. Reflective safety.

R



The manufacturer **Regine IQtrim** offers a brand of reflective prints and tapes for sports and professional wear called *IQ-seen clearly visible*. These reflective products are used, for example, for police, fire brigade, and German Red Cross uniforms. In addition, it is also used for children's clothes to ensure high visibility.

Regular Fit. Normal fit.

R



Regular Fit means that business shirts provide a normal fit, meaning a classic leisurely fit. **Regular Fit** shirts are therefore ideal for standard menswear.

ALL TYPES OF FIT:

- Body fit
- Close fit
- Regular fit
- Normal fit
- Modern fit
- Figure-hugging fit



Renforcé. Highly durable.

R



Renforcé is a medium fine fabric which is both soft and smooth whilst also very durable. Renforcé is able to regulate body temperature.

Pure wool. The natural alternative to cotton.

P



The term “**pure new wool**” refers to new wool sourced directly from a living animal. It does not concern any type of reused materials, i.e. manufactured from repurposed textiles or recycling products such as regenerated wool.

See also: wool, cotton, organic cotton, Pima cotton

3M™ Scotchlite™ Reflective Material. A reliable companion on the street.

S



The reflective material produced by the company **3M™ Scotchlite™** ensures greater safety at dusk and after dark — especially in road traffic. Due to the very strong CIL values in combination with a large reflective surface, it provides better visibility as a pedestrian or a cyclist. This in turn can decrease the rate of accidents caused.

3M Scotchlite™
Reflective Material

Seamless. Tight fit without annoying seams.

S



The term **seamless** describes the smooth design of lingerie without hems or other joints. As a result, tight fitting textiles can be worn without the annoying problem of visible and pressing seams. The textiles fit like a second skin on the body, making them incredibly comfortable and almost invisible with a soft form. This innovative seamless fashion combines appearance, comfort, and function.

Seersucker. No need to iron.

S



Seersucker is an iron-free material, predominantly cotton, and typically with a puckered striped print.

Silk. An especially glossy and fine fabric.

S



Silk is a very fine textile fabric which is derived from the cocoons of silkworms. It is the only continuous fibre found in nature and originates from China. The fabric is characterised by its shine and high tensile strength but also its cold and warmth insulation qualities. However, silk is also very sensitive to high temperatures, abrasion, and water marks.

Lingerie with silk:

Luxury for the skin. Premium comfort, pleasantly soft — keeps you warm in the winter and cool in the summer. The perfect underwear for a business outfit.

PROPERTIES:

It is shiny and delicate.

It has a pleasant touch.

It is skin-friendly.

It has a good level of moisture absorption.

Softshell. Warm functional clothing that protects against wind and weather.

S



Softshell stands for elastic, warming, and breathable functional wear which simultaneously protects against wind and water.

S

STANDARD 100 by OEKO-TEX®. Maximum safety for the consumer.

The STANDARD 100 by OEKO-TEX® which was introduced in 1992 is a globally recognised certification system for the pollutant testing of all kinds of textiles products. The laboratory testing is performed by an independent testing institute on the basis of a comprehensive catalogue of criteria which is updated every year in the interest of effective consumer protection.

For a product to be awarded the STANDARD 100 label, all of its components — including non-textile parts such as buttons and zippers — must fulfil rigorous requirements which apply worldwide. Regular inspections are conducted by the OEKO-TEX® Institute even after the STANDARD 100 certificate has been awarded to ensure the continued compliance with the required criteria and therefore also a high level of product safety. The extended STANDARD 100 by OEKO-TEX® criteria catalogue pursuant to Appendix 6, which contains stricter threshold values than the previous Appendix 4, was especially developed for companies whose goals are very strongly aligned with those of the Detox campaign.



T

TACTEL®. As popular as cotton.

TACTEL® is an INVISTA brand for polyamide fibres. The fibres are used for a wide variety of different material types and areas of clothing in a large range of yarn counts — right up to velvety microfibre. Woven and knitted fabrics made from or containing the TACTEL® fibres are soft, light, breathable, durable and easy to clean. TACTEL® brand fibres are found in hosiery, lingerie and underwear, as well as sportswear such as outdoor, gym/fitness wear.

See also: Cotton, polyamide



TENCEL™ LYOCELL 100% organic fibres.

T



TENCEL™ Lyocell fibres produced by Lenzing are of natural origin as they are made from wood. Textiles made from TENCEL™ Lyocell fibres feel cool and dry to the skin.



3M™ Thinsulate™ Insulation. For heat insulation/protection from the cold.

T



3M™ Thinsulate™ Insulation is a heat-insulating microfibre fleece which is used for lining in jackets, trousers, gloves, hats and shoes.

The material comes in various densities with different performance characteristics — depending on the area of use.

It is easily permeable by water vapour, tear-resistant, long-lasting, and easy to clean.

In addition, it also ensures a very good level of warmth insulation.



3M™ Thinsulate™ Insulation – extra warmth. Extra warm in winter.

T



3M™ Thinsulate™ Insulation – Extra Warmth is a warm fleece with a light weight but strong insulating properties.



3M™ Thinsulate™ Insulation – Featherless. Light and warm.

T



3M™ Thinsulate Insulation™ – Featherless is made from light, durable polyester fibres and closely resembles real down feathers. It retains warmth just as well as down feathers while delivering an even better performance in wet weather. 3M™ Thinsulate™ Insulation – Loose Fill is washable, space-saving, and light. In addition, it is a breathable material which is particularly suitable for people who suffer from allergies.



T

TREVIRA®. Functional textiles in tested brand quality.

The **TREVIRA®** brand stands for textiles containing highly functional polyester fibres and yarns. Clothing made from tested Trevira-brand polyester is easy to clean, crease-free, stable in form, and durable. Depending on the purpose of use, certain Trevira fibres/yarns can also give a garment additional textile functions, such as minimal pilling, breathable and/or antimicrobial properties.

**Ultrasonic.** Simply seamless.

U



Ultrasonic describes the seamless bonding technology for joining two materials together by means of ultrasonic sealing. This means that excessive quilting seams are no longer necessary, making jackets, for example, even more weather-resistant.

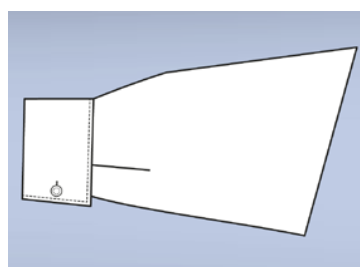
French cuff Suits every dinner shirt.

F



The angular **French cuff** consists of a double layer of fabric which is folded over at the wrist and secured using cufflinks. This is the most elegant and formal style of cuff, also known as the double cuff or folded cuff. Only this style of shirt is worn with a dinner jacket/tuxedo.

See also: Two-button cuff



UV protection clothing. Particularly suited to sensitive skin.

U



Through the use of very densely woven fabric and consciously selected colours, it is possible to equip textiles to provide UV protection of more than factor 40. Certified **UV protection clothing** is especially important for people with particularly sensitive skin, for example, children, or for instances of particularly intense sun exposure, for example during outdoor sports.

VILOFT®. High-Tech textiles.

V



VILOFT® is a high-tech fibre made from renewable natural resources and is therefore 100% biodegradable. In Germany, VI-LOFT® is manufactured from cellulose sourced from sustainably cultivated plantations. An especially designed fibre cross section creates tiny microscopic air cells in the fabric surface, which provide exceptional functional characteristics for the garment. VILOFT clothing® therefore feels breezy and light, is very breathable, and still retains good warmth insulation. This enables an excellent microclimate for the skin while providing a high level of comfort.

VILOFT®

Viscoelastic.

V



The word "visco" comes from the Greek language and means something along the lines of "tough". The term "elastic" means that a material can be stretched. In connection with mattresses, neck pillows, and neck bolsters, the term "viscoelastic" describes the characteristic of the foam used, which has the ability to adapt exactly to body contours through pressure and body warmth but also to regain its original shape afterwards.

V

Viscose. Flowing drape and silky shine.

Viscose strongly resembles cotton. It is characterised by its especially soft, flowing drape and its precious lustre. In addition, it is also highly absorbent. Due to the suppleness and loose airy fit, it offers a high level of comfort.

See also: Cotton, Modal

W

Water-repellent. Water simply runs off.

Water and watery dirt simply run off the **water-repellent fabric** in droplets, leaving it clean and dry.

Experts refer to this effect as the “hydrophobic effect”.

Water-repellent fabrics are used, for example, for outdoor clothing and home textiles.

The water-repellent finishing is applied to the fabric during a special treatment process.

Waterproof. Leaves no chance for water.

W



The term **waterproof** refers to all textile properties which sufficiently prevent the penetration of water. In order to state the impermeability of technical fabrics, such as that of functional and wet weather clothing, among other methods a water column is used as a unit of measurement. A water proof rating is specified for the material which indicates the level of water pressure the material can withstand before allowing water to penetrate. Above a certain rating (for wet weather clothing 1,300mm or more) the material is classified as waterproof.

Wendler interlining. High-quality shirt collars.

W



Wendler is an international market leader in the production of woven interlining for shirt collars and blouses of premium quality.

W

Windproof. Protected from the wind, always and everywhere.



Windproof material prevents the constant exchange of the warm insulated air layer on the body with the cooler surrounding air. This prevents the body from unwanted drops in temperature.

W

Wool. The all-rounder among textiles.



Wool is the name given to the soft hairs of the fleece of certain mammals, in particular, sheep. A distinction is made between pure lambswool, pure new wool, and regenerated wool. Pure lambswool is particularly soft and fine, and comes from the first time a lamb of no older than six months is shorn for the first time.

See also: new wool, organic cotton, cotton, Pima cotton

PROPERTIES:

Wool is insulating and warm:

Since wool products contain a high percentage of air, they are very good for isolating warmth.

Wool regulates body temperature:

Its ability to absorb moisture in vapour form by up to a third of its own weight, and then to expel the moisture again according to temperature, ensures that the body remains dry.

It does not crease easily.

It has a low tendency of soiling.

It is elastic, flexible, and durable.

It is easy to colour.

W

Wool label. The seal of quality.



The **wool label** is a quality seal used for pure new wool.

See also: Virgin wool



Twine. Double the tensile strength.

T



The term **twine** describes a thread composed of at least two smaller strands twisted together. Twine has a high tensile strength and is smoother than non-twisted single yarn. It is often used for high-quality shirts.